

The Central Okanagan Naturalists' Club Newsletter

www.okanangannature.org

December 2011 – January 2012



Join us at our regular monthly meeting on the second Tuesday of the month—December 13th—for our feature presentation:

"Nahanni National Park Reserve"
by George Scotter

Nahanni National Park Reserve contains some of Canada's most spectacular mountains, glaciers, canyons, waterfalls, hot springs, extensive plateaus, and karst formations, where the natural processes remain the dominant shaping forces.

Naturally-occurring northern mountain and boreal plant communities thrive alongside associated native animal species, such as Dall's sheep, mountain goats, caribou, moose, bears, and more than 200 species of birds.

The recently expanded boundary of Nahanni makes it one of the larger national parks in the world and the third largest in Canada. It is recognized as both a Canadian Heritage River and as a World Heritage Site. George Scotter, who participated as team leader in the planning of the park, will give a slide presentation on this fascinating region.

Merry.
Christmas



INDEX

Club Information	2
Minutes of November 2011 meeting	3
The Western Painted Turtle Project	4
Notices	4
Winter Hibernation	4, 5,7
Notice of 2012 CONC AGM	5
Silver Star Provincial Park Alert	5
The Birding Report	6
President's Message	7
Wednesday Hikes Report	7
Book: Okanagan Geology South	8

The January 2012 Meeting

Join us at our monthly meeting on the second Tuesday of the month—January 10th—for our feature presentation:

City of Kelowna Parks and Environment:
Our achievements and the upcoming Challenges for 2012.

Our two presenters will be from the City of Kelowna:
Terry Barton, Manager, Parks & Public Places
Infrastructure Planning, and Todd Cashin, Environment and
Land Use Manager.

Photo Contest

The photos will be judged by the audience at the January meeting. See the November Newsletter for contest details.

**Central Okanagan Naturalists' Club. www.okanagannature.org
P.O. Box 21128, Orchard Park P.O., Kelowna, B.C. V1Y 9N8**

	EXECUTIVE OFFICE	<u>telephone</u>	<u>email</u>	<u>Representing</u>
President:	Fiona Flook	250-860-9751	donaldandfiona@shaw.ca	
Vice-Pres:	vacant			
Secretary	Pat Westheuser	250-769-6605	hughwest@shaw.ca	
	Brenda Thomson			
Treasurer	Peter Campbell	250-452-6959	pg.campbell@shaw.ca	
Immediate Past President	Don Guild	250-768-3334	guilds@telus.net	FBCN Director:
Directors:	1. Peg Emigh	250-861-3694	wemigh@shaw.ca	Membership
	2. Rick Gee	250-763-0124	rdgee@shaw.ca	Hiking
	3. Peter Green	250-765-1737	N/A	Botany
	4. Les Gyug	250-769-5907	les_gyug@shaw.ca	Programme
	5. Lesley Robertson	250-763-5698	lessismore@telus.net	Birding
	6. Dianne Hayley	250-767-3383	dhayley@shaw.ca	

NEWSLETTER: Editor: Teresa Smith 250-860-9133 tmsmith.rio@shaw.ca. Mailing: Norma Coburn 763-4499 Email: Peg Emigh 250- 861-3694. Deadline date for submissions is the fourth Tuesday of each month. Drop off at Second Tyme Around (front desk), corner of Spall and Springfield or mail to: Teresa Smith, 292 Rio Drive South, Kelowna, B.C. V1V 2B1

WEB: www.okanagannature.org. Webmaster: Teresa M. Smith tmsmith.rio@shaw.ca

MEMBERSHIP: Bill and Peg Emigh 250-861-3694 **Badges:** same.

ANNUAL DUES: single \$30, family \$42, students \$14, includes Newsletter (except January, July & August). Membership form and waiver form can be found on CONC website www.okanagannature.org.

Send your name, address, telephone number, email address, waiver form and dues to: CONC Membership, Box 21128, Orchard Park P.O., Kelowna, B.C. V1Y 9N8.

Honorary Life Members: Brenda Thomson (2005), Harry Almond (2005), and Muriel Westwood (2010).

REGULAR ACITIVITIES

All activities are seasonal. If in doubt, check with the contact person. Or phone any of the executive.

MONTHLY MEETINGS: Held on the 2nd Tuesday of each month, September to June at 7 p.m. in the Evangel Church, 3261 Gordon Drive, Kelowna. **Visitors are welcome.**

Hosts: Bev Thomas 250-762-7610, Liz Daley 250-764-2310.

Librarians: Etta Scotter 778-478-4115 and Sherrell Davidson 250-491-8146.

Programme Coordinator: Les Gyug 250-769-5907

BIRDING: Howard Braun 250-768-4339 & Gwynneth Wilson 250-762-6876.

Thursday birding trips meet 8 am (Apr-Sep) or 9 am (Oct-Mar) at St. Charles Garnier Church, 3645 Benvoulin Rd.

BOTANY: Peter Green 250-765-1737. Friday Botany trips: Meet 9:15 am (departure 9:30 am) at the Apple Bowl.*

HIKES. (Bring a lunch). For general information call Rick Gee 250-763-0124

- **Wednesday 9 am Hikes:** Meet at 8:45 am at the Apple Bowl*. Contact Sherrell Davidson 250-491-8146

- **Wednesday 9:30 am Ramblers:** Contact Shirley Fitzpatrick 250-860-1576

- **Weekend Hikes:** Saturdays and Sunday. Meet at the Apple Bowl* **Times as per schedule.**

Contact: Rick Gee 250-763-0124

*1555 Burtch Road, the Apple Bowl parking lot (the site of the former Dr. Knox School)



Please bring your own coffee mugs to the meetings.

OTHER COMMITTEES and KEY CLUB REPRESENTATIVES

Conservation Committee	Don Guild	250-768-3334
Ecological Reserves	Don Guild	250-768-3334
BC Nature (F.B.C.N.)	Don Guild	250-768-3334
Library	Sherrell Davidson	250-491-8146
Mildred Wardlaw Nature Trails	Don Wilson 250-763-8036 and	Rick Gee 250-763-0124
Young Naturalists' Club of Kelowna (YNC)	Fiona Flook 250-860-9751 and	Pat Westheuser 250-769-6605
Publicity	Dianne Hayley	250-767-3383

MINUTES OF NOVEMBER 8th, 2011 CONC REGULAR MEETING

The meeting was called to order at 7:03

SIGHTINGS:

Leslie Robertson reported two Great Horned Owls by McCurdy Road. Bitten Tisdale reported a Golden Eagle viewed from Poplar Point. Brenda Thomson reported that four Greater White-Fronted Geese made a brief stop off Gordon Drive. President Fiona commented on a recent newspaper article regarding mussels and milfoil. It seems the native Rocky Mountain Mussel may be impacted by the removal of the invasive milfoil weed.

MINUTES:

Adopted as corrected by Les Gyug, and seconded by Don Guild. The correction was the omission of the Wierenga's sighting of Sandhill Cranes in Rutland.

TREASURER'S REPORT no report

NOMINATING COMMITTEE.

Dianne Hayley asked that volunteers willing to help would put their names foreword on a signup sheet. She encouraged members to follow the two years of service system which gives more people a turn and eliminates the fear of being stuck; two years goes by quickly and members will find the "jobs" interesting and rewarding.

OLD BUSINESS:

The mushroom walk was well attended and realized a profit of \$200.00.

The next *Discover Nature* walk will be on November 17 on the Westside, led by Emile Brox.

Les Gyug gave an update on the photo contest and reminded everyone that the photo need not be just in the Okanagan, it could be anywhere in the world. Les also reported that planning for the BC Nature AGM is well underway and reminded members that lots of volunteers will be needed.

There will be no Sunflower Festival this year; it may be revitalized in 2013.

There will be a Sunflower Walk on Saturday May 5 2012.

Voting on a possible change of day for the CONC regular meeting is underway.

The deadline is December 1, 2011.

COMMITTEE REPORTS:

Membership. Peg Emigh reported there are approximately 125 memberships. Several new members were welcomed.

Hiking. Sherrell Davidson reported that the last scheduled Wednesday hike of the season will be to Spion Kop on November 9th.

Birding. Leslie Robertson reported that the birders continue on their regular schedule.

Library. Sherrell Davidson announced the new edition of Okanagan Geology has been published, co- authored by Murray Roed & Bob Fulton. Bob has donated a copy to the CONC library. He commented that the new book does not replace the old,. But focuses on the area from Peachland to the south whereas the old book was more centered in Kelowna .

Conservation: Don Guild spoke about the Westside land swap. A letter was sent by CONC to various like-minded groups suggesting a coalition to deal with some conservation concerns. So far only COLT has replied.

Newsletter: Editor, Teresa Smith reported that 40 newsletters are still sent by regular mail. The deadline for articles is the last Tuesday of the month.

NEW BUSINESS

It was moved by Gwynneth Wilson , seconded by Don Guild, that the COBBS bursary be raised from \$775.00 to \$1000.00. The Motion passed. After discussion, it was decided there should be no change in the present wording of the award.

The Christmas bird count will be on December 17, 2011. In the absence of the usual chili cooks, who provide hot food for the tally, replacements are needed. (replacements were found at coffee time)

The Lake Country Bird Count on December 14, 2011 will be organized by Les Gyug and Tanya Seebacher. It will be a CONC sponsored event.

Greater White-Fronted Goose



Photo: Wikipedia

Breeding across the tundra from Nunavut to Siberia, across Russia, and in Greenland, the Greater White-fronted Goose has one of the largest ranges of any species of goose in the world. In North America, however, it is common only west of the Mississippi River, where it is found in large flocks in wetlands and croplands.

As is true of many geese, Greater White-fronted Goose pairs stay together for years and migrate together, along with their offspring. White-front family bonds can last longer than in most geese, and some young stay with their parents through the next breeding season. Parent and sibling associations may continue throughout their lives.

Habitat: Breeds along tundra wetlands. Winters in agricultural fields, marshes, bays, and lakes

Food: Seeds, grain, grasses, sedges, berries

Nest: a scrape in the ground lined with plant material and down feathers.

Clutch Size - 1-8 eggs. Egg Description - White to tan, stained during incubation. Condition at Hatching - Chicks are covered with down and eyes open. Leaves nest within 24 hours of hatching and has the ability to swim and feed.

Behaviour: Gleans grain from fields, grazes on grass, forages in shallow water by tipping-up

Source: The Cornell Lab of Ornithology
www.allaboutbirds.org



Dear Naturalists' Club Members.

Two years ago we found Western painted turtles in our long jump sand pits at l'École KLO Middle School. We brought two turtles that survived into our classroom to raise them for two months. When we released them in Fascieux Creek, we realized that more turtle eggs must be already laid in the sand pits. We quickly took action.

With the help of Mme Hamilton's classes, two fences were built around the sand pits to protect the turtles. Hugh Westhauser and Don Flook, two members of the Central Okanagan Naturalist Club worked with close to 100 students for a whole day to complete the project. Together, they built the two fences around the turtle nesting grounds and installed a signboard that was previously built by Don.



We would like to thank Don and Hugh for helping us save the turtles. The fences are keeping the turtles protected from danger of students accidentally jumping on them. We hope that in the springtime, the turtle offspring will make it safely to the creek without being disrupted by passer-bys. After the sign board was put up, we made a poster that explains the life cycle of the Western painted turtle, we put in pictures that the students drew and we added the Naturalist

Club logo next to it.

Thank you so much for your help. *Erin Loukras, Domonique Murdoch, Nyssa Morgan (Grade 8, KLO Eco Club, École KLO Middle School) and Jennifer Loukras (Former member of the KLO Eco Club now in Grade 11 at KSS)*

IF YOU DON'T RECEIVE YOUR NEXT NEWSLETTER ...

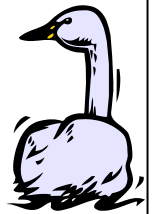
...it may be because you haven't renewed your membership. All memberships expire on September 30 of each year and our mail (and email) list is revised on the following December 31. If you do not receive your next Newsletter, even though you have renewed your membership, please call me to sort it out.

**Peg Emigh (membership)
Phone: 250-861-3694 Email: wemigh@shaw.ca**

Applications forms are available on the website or at the December meeting

*There are two **Christmas Bird Counts** in which some of our members participate.*

If you would like to join a group be prepared to be outside most of the day. Approximately from 8am to 3 pm. and dress very warmly.



Lake Country bird count December 14th contact Ann Gibson tilybird@hotmail.com 250-863-2453

Kelowna bird count December 17th contact Don Wilson dgwisn@shaw.ca Afterwards, on the 17th counters are welcomed at the EECO Center to a bowl of chili. Bring bowl and cutlery.

The Swan and Eagle Count will take place on January 15th, 2012



Winter Hibernation

Winter is a tough time for plants and animals. Animals that cannot migrate south to warmer climates have to endure the cold and the snow. Frost kills the tasty parts of the plants and food is scarce in the winter. Some animals eat a lot during the fall and put on a thick layer of fat. This layer of fat means they can resist the cold and lack of food and sleep all winter in the safety of a den. These animals are deep sleepers or hibernators which means they can lower their body temperature, slow their heart and breathing rates and survive on their stored fat.

Woodchucks and other marmots are also typical hibernators. They put on a layer of fat in the summer, and then disappear into a burrow in the fall. They do not store food for the winter and rely on their fat reserves for survival. During hibernation their body temperature drops, their heartbeat slows from 100 beats per minute to 15 and they breathe only once every 5 - 6 minutes.

Source: *Knee High Nature.*

CONC ANNUAL GENERAL MEETING MINUTES

Tuesday, January 11, 2011, at 7:00 pm. Evangel Church, 3261 Gordon Drive, Kelowna BC

The meeting was called to order at 7.04 by president, Fiona Flook
Confirmation of quorum moved by the president, seconded by Hugh Westheuser. 54 members were present; 30 was needed for a quorum
Adoption of agenda: moved by the president, seconded by Pat Westheuser

Adoption of 2010 AGM Minutes, held January 12, 2010. moved by Lesley Robertson, seconded by Sylvia Blackburne.

President's report, moved by president, seconded by Margaret Bryan.

Treasurer's report, moved by Peter Campbell, seconded by Hugh Westheuser.

Committee reports to be published in the newsletter.

Election of officers, chaired by Don Guild.

Slate of officers elected : **President**, Fiona Flook. **Vice-president** , vacant.

Secretary 1, Pat Westheuser

Secretary 2, Brenda Thomson. **Treasurer** , Peter Campbell. **Directors**:

Peg Emigh, Rick Gee, Peter Green, Lesley Robertson, Les Gyug, Dianne Hayley. **BCNature representative**, Don Guild

Acceptance of officers moved by Don Guild, seconded by Margaret Bryan.

Signing officers, Fiona Flook, Peter Campbell and Don Guild

Appointment of Auditor, Not confirmed.

The meeting moved adjourned by Emil Bronx.

Notice of the CONC Annual General Meeting.

The Annual General Meeting of the Central Okanagan Naturalists' Club (CONC) will be held on Tuesday, January 10th 2012 at 7p.m. at Evangel Church, 3261 Gordon Drive, Kelowna, B.C.

The Annual Banquet

Will be a Pot Luck Dinner to be held on Tuesday, February 14th, 2012 at Evangel Church.

Tickets are \$5 and will be available at the January meeting and at Second Thyme Around on the NW corner of Spall and Springfield in January.

The Citizens' Coalition to Save Silver Star Provincial Park

has tentatively posted a video on You Tube entitled "Saving The Big White Mountain Ecological Reserve" in an effort to raise public awareness of Schumann Resorts' plans to build chairlifts in the reserve. Here is the link:

http://www.youtube.com/watch?v=XQ1i_5Zj53A

I was hoping that some of CONC members might have some photos or video clips of unique features in the Big White Eco reserve that could be added to the video, as I was only able to hike into the southernmost part of the reserve for one day. Any input into how to raise awareness of this issue would be greatly appreciated. Also, would anyone know who the warden is for the BWMER?

If you have any questions, please feel free to call me any time at my shop at (250) 549-2320 or my cell at (250) 308-7969.

Randy Schellenberg, Spokesman, Citizens' Coalition to Save Silver Star Provincial Park
www.savesilverstarpark.org

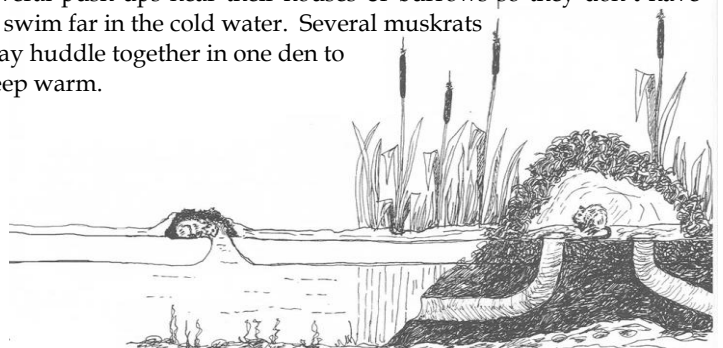
Winter Hibernation



Frogs also hibernate. Wood frogs and boreal chorus frogs bury themselves under leaf litter or in loose soil. This does not give them much protection, and they do freeze. Yet somehow they

manage to survive. A low metabolic rate and chemical changes that prevent the formation of ice-crystals within their cells help them through the weeks of winter weather. Leopard frogs hibernate at the bottom of rivers or streams, where moving water does not drop below the freezing point.

In the fall, **muskrats** may construct winter houses or burrow in banks. The muskrat does not store large quantities of food for winter, so it must swim under the ice to find food, bite off plants and take them to the nearest "push-up" to eat. Muskrats make several push-ups near their houses or burrows so they don't have to swim far in the cold water. Several muskrats may huddle together in one den to keep warm.



September 13 started well with a **Belted Kingfisher** being seen at the parking lot. We headed to Turtle bay where we saw **Red-necked Grebes** and **American Coots**. On Wood Lake we spotted **Western Grebes** and **Horned Grebes**. Birds along the shore included **Black-capped Chickadees** and a **Hairy Woodpecker**. The best sighting of the day was a pair of Adult **Bald Eagles** in playful flight over Wood Lake.

Clearing skies greeted us on October 20. On the end of Burtch Road we saw a **Merlin**, **White Crowned sparrows** and a **Lincoln's Sparrow**. We walked through to Munson's Pond where the water fowl included **Buffleheads**, **Canvas Back** and **Wood Ducks**. At least twelve **Great Blue Herons** were roosting. We then walked in Sutherland Hill Park where we saw numerous **American Robins**, **Pygmy Nuthatches** and a **Kingfisher**. A late **Osprey** cruised overhead taking advantage of the Kokanee run as a food source before heading south.

October 27 was cold, a sign of winter coming. We first stopped at Rotary Beach where some Greater Scaup were seen. From the end of Bluebird Road we could see a large flock of **Ringbill** and Herring Gulls at the mouth of Mission Creek. At the Sailing Club lake access we spotted a **Common Loon** and an adult Bald Eagle. We found **Stellar's Jays** and **Cedar Waxwings** on Sarsons Road. A walk at Woodhaven uncovered **Pine Siskins**, a **Varied Thrush** and a glimpse at a possible **Woodcreeper**. On November 1 our first stop was Kinsman Park where seven **Tundra Swans** were swimming offshore. Two of them had numbered neck bands. They were quickly joined by seven more that flew in including one wearing a neckband. A posting to the *BC interior Bird List* later in the week revealed these birds were banded in Alaska in 2008 and 2009. The two groups vocalized as they met each other. We carried on to Rotary Marsh There we saw a number of **Hooded Mergansers** as well as a Belted Kingfisher, a Merlin and a **Sharp-shinned Hawk**.

On November 10 we headed to the West Side. We walked into Kalamour Park and saw Pygmy Nuthatches, a **Red Tailed Hawk** and an Adult Bald Eagle. Green Bay was busy with water fowl including Buffleheads, Hooded Mergansers and 14 Tundra Swans. A Belted Kingfisher flew by and a Great Blue Heron was standing on one of the docks.

THE FAMILY COLUMBIDAE are more commonly known as pigeons and doves. They are a group of small to medium sized birds with short legs and necks and small heads. They commonly choose open habitats such as fields, grasslands, forest edges and cities. In our area we have four species – the native Mourning Dove, the Band-tailed Pigeon, the introduced Rock Pigeon (the common city pigeon) and the more recently established Eurasian Collared Dove.

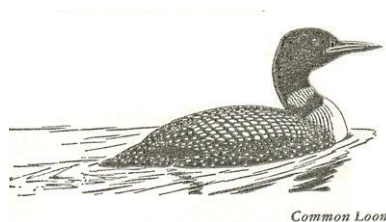
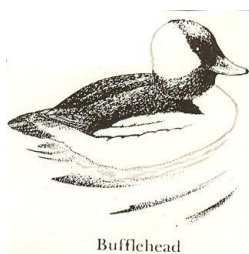
The Band-tailed Pigeon is a forest bird only rarely seen in the Okanagan. At thirteen and one half inches it is larger than the common Rock Pigeon. It has a broad grey tipped fan tail, a white neck band and a yellow bill.



Our other native member of the group is the Mourning Dove. It is a common resident of open spaces and city gardens that frequently visits our bird feeders. At ten and one half inches it has a slim body and long tapered tail. It feeds in large flocks. The colour is a dusky brown with a few dark spots.

The very common introduced pigeon of our urban areas and barnyards is properly known as a Rock Pigeon due to its habit of nesting on cliffs in the Middle Eastern countries where it originated. It was an easy adaptation to move to our buildings as a nest site close to grain stores. This bird is most commonly grey with a clear white rump patch. Because of new blood from domestic escapes chestnut and white birds are seen. They were introduced to North America in the early 17th century.

A more recent addition to the local bird population is the Eurasian Collared Dove. Various populations have been established in North America in the last forty years. In our area the start seems to have been a release in the Cawston area in the late 1970s. This bird prefers suburban habitats usually alone or in pairs. It is noticeably larger and paler than the Mourning Dove. The dark neck ring is easily visible. The tail is fanned in flight with white showing in the corners.





The President's Message

As you have noticed the newsletter is a little later this month. Our editor has been on holiday and returned on November 30th. We are so pleased to receive the great newsletter anytime, however do not expect a January newsletter. There is a club tradition that the editor has a break over the holidays.

I will be in Britain until November 28th and the next directors' meeting is December 1st. We shall be looking at the results of the poll regarding changing meeting dates. The results will be announced on December 13th. If you wish something discussed at the January AGM or an item included in the 2012-2013 budget please contact the appropriate director.

Planning for the BC Nature AGM May 10-13 is well in hand and the agenda will be printed in the next BCNature magazine. The BCNature and CONCs websites will have expanded information. These websites will be identical and can be updated as required. Several CONC members have agreed to be in charge of various parts on the AGM and will be asking for help. Please join in. Believe me the BCNature conferences are fun and a great way to showcase CONC and our area. Remember this is our 50th Anniversary and this club was one of the founding clubs of the Federation of BC Naturalists. www.bcnature.ca

How do insects survive the winter?

Some insects manufacture their own antifreeze (glycerol) which helps prevent their soft tissues from freezing during the long cold winter.

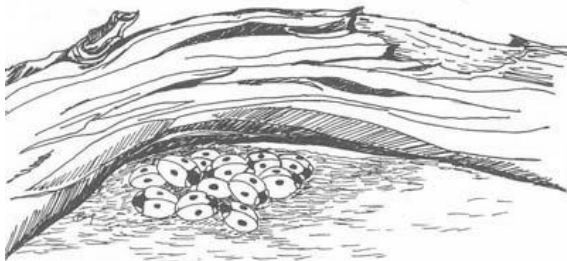
Ladybird beetles may travel to a sheltered spot and huddle together throughout the winter.

Some **butterflies** and **moths** overwinter as adults or in the pupa. Some spiders hibernate in the egg state and some others as adults.

Some insects (in the egg or larval stages) may shelter inside the galls of plants.

When winter arrives, **Queen bumble bees** are a little fatter than the other bees in the hive. They are often the only ones that survive the cold weather and lack of food. They often hibernate in old ground squirrel holes.

New **queen wasps** leave the old nests in fall and seek a sheltered spot to hibernate. Winter is a safe time to look more closely at a wasp's nest. Some worker wasps may be found frozen in the old nests. *Source: Knee High Nature.*



Wednesday Hiking Group

Well it is the end of the Wednesday hikes for 2011. We did have a great year.

Our first hike was to Knox Mt with Bitten Tisdale. It was a little cool but we were happy to be trekking again. The next few hikes included Fintry Falls with Linley McKenna as our leader; then Robert Lake took us to Pentiction area to view Skaha Bluffs, and we also did three trips to Myra Bellevue Provincial Park.

Our CONC group did took on an Adopt a Trail on the Heckle and Jackal trails. Thanks Bill and Peg for organizing this each year. Also thank you to Bruce Sankey, Betty James, Gerta Watts, Mike Dakine, Brian Riphagen, John Green, Bob Fulton, Don Guild, Dianne Healy, and everyone else that participated in our hikes this year.

Our average attendance this year was around eleven people each week. Thirty-six people attend the Pub Hike at New Train Station Pub, and a great time was had by all. We also had pot luck at my home to discuss our hiking trips and suggestions for the future. If anyone missed this please feel free to discuss any ideas with me.



We did visit some new areas and we will try to do this again in 2012. It is planned to travel a little further once a month to explore some other hiking trails.

It is now time to move into the snowshoe mode. Robert Lake will be leading snowshoe trips most Wednesdays and we will keep you informed by email or phone.
Sherrell Davidson



*Photo: Roland Greuber.
Hiking in Myra-Bellevue Provincial Park*

New
Release

Sandhill
BOOK MARKETING



Okanagan Geology SOUTH

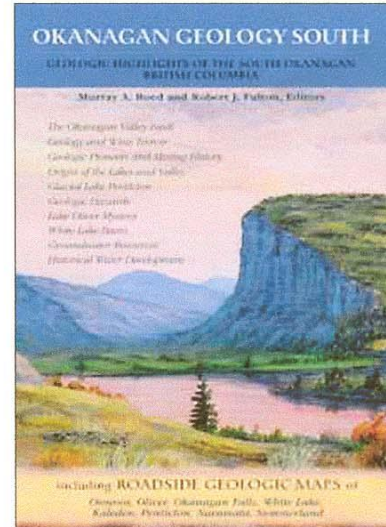
Geologic Highlights of the
South Okanagan, British Columbia
Murray A. Roed & Robert J. Fulton, Eds

This just - released companion volume to the highly successful *Okanagan Geology*, focuses on the unique geologic features of the South Okanagan - features not present anywhere else in the Okanagan region. Roadside geologic maps and descriptions of each of the townsites from Summerland to Osoyoos, (also White Lake), form the “heart” of this new book. From a discussion of the Okanagan Valley fault, to geology and its relationship to wine terroir, the book covers a wide range of topics that show how the land upon which we live and work - tells a powerful story of natural forces and geologic history. Also included in the book:

- A history of early geologic exploration traces how changing theories have led to plate tectonics that modern geologists now employ.
- Geologic highlights of Osoyoos, Oliver, White Lake basin, Okanagan Falls, Penticton, Naramata and Summerland
- Geological disasters and near-disasters such as the Testalinden Creek debris torrent and the rock fracture that closed Hwy 97 for three weeks in October, 2008.
- A review of historic gold mining reveals that it was surprisingly lucrative in today’s dollars.
- Water is a major topic of concern in the south Okanagan and is addressed here. A companion chapter on groundwater, the only future water source, presents ideas to assist exploration and calls for a far more regulated groundwater industry.

The book has over 150 colour illustrations, is written in a non-technical manner and will be of interest to anyone curious about the many spectacular landforms, lakes and streams of the south Okanagan Valley.

Pb, 6 x 9, 256 pp, all colour, maps, glossary, index
ISBN 978-0-9699795-3-1 \$24.95
Okanagan Geology Committee • May 2011



*Review copies to
newspapers and radio
stations throughout
the Okanagan -
expect launch
publicity*

ORDERING INFORMATION

Contact: Nancy Wise
Sandhill Book Marketing
#4 - 3308 Appaloosa Rd
Kelowna, BC V1V 2W5
Ph: 1-800-667-3848
Fax: 250-491-4066
info@sandhillbooks.com